

alba.premium 1226

Model Code F5668

date of issue 15-03-23 revision 00
revision of 16-06-23 (the present replaces any previous versions)

Designer: centro studi interno

Structure: pinewood, masonite, multilayer, and plywood covered with ecological polyurethane foam covered with 100% polyester layer. Backrests rest on a metal mechanism*.

Spring system: elastic webbing

Seat Padding: seat cushions in ecological polyurethane foam covered with 100% polyester layer.

Back Padding: back cushions in ecological polyurethane foam covered with 100% polyester layer.

Arm Interior: in ecological polyurethane foam covered with 100% polyester layer.

Removability: not available, loose seat cushions.

Sewing: leather covers feasible with contrast stitching in the colors available; cuts and sewing vary on microfibre (or fabric) covers.

Mechanisms: * the model is equipped with manually liftable armrests and manually adjustable backrests so, that the seat depth can be increased by 42 cm. "Comfort" versions are equipped with an additional mechanism inside the backrests that allows the headrest area to be tilted forward. The total depth of the model with backrests positioned outward is 148 cm (168 cm on versions AU6/AU7 - DD9/DE0 - AU8/AU9 - DE3/DE4, 125 cm on version BS3/DE9, 132 cm on version QB1/DE7, 151 cm on versions BY7/BY8 - DF1/DF2).

Standard feet: in black PVC, h. 4 cm



Density of seat and back kg/cbm (±5%) ⁽¹⁾

Markets	Seat	Back
I	35 Medium	27
D - NL - CH	35 sostenuto hard	28 hard
USA - California	35 soft	27 soft
GB	37 fire retardant	31 fire retardant
Others		

⁽¹⁾Density: volume mass apparently determined on materials without any kind of covers and according to the UNI EN ISO 845 regulations. Indicated values refer to production averages; the Company reserves the right, if needed, to make changes to the declared technical characteristics. Before use, it is advisable to look at the SAFETY INFORMATION TECHNIQUE for info regarding use and protection of people and of the environment, in compliance with existing EEC regulations.

Coverings

	suggested	not suggested	not possible
thick leathers	✓		
thin elastic leathers	✓		
natural leathers	✓		
fabric*	✓		
microfibre*	✓		
leather + split	✓		
DeLuxe*			✓
multi colour**	✓		
multi-category**	✓		
multi covering**	✓		

Please note: for not removable models, only one colour fabric covers are available.

* Deluxe, Fabrics and microfibers are not available for the U.K. - USA/CA - IE market.



Feet



PVC H4



Ottoman



We reserve the right to amend materials, covers and product dimensions shown on the data sheet, for production purposes and without prior notice. The line drawings, graphic information, dimensions, and volume provided are approximate and may vary due to the tolerances allowed in the production process with a view to improvements. The following maximum load values are recommended under normal use: armchairs max. 120 kg, 2-seater sofas max. 200 kg (2x100 kg), 3-seater sofas max. 240 kg (3x80 kg). Exceeding the recommended load may cause a structural failure of the sofa/armchair or its components.

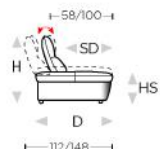


↑ fold following the dotted line ↑

alba.premium 1226



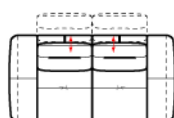
L Length - H Height - D Depth - SH Seat Height - SD Seat Depth
Dimensions refer to maximum sizes of the version with closed mechanism (where available).



dimensions

version code

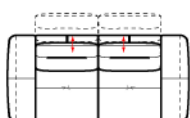
Description



L 216
H96 D112 SH46 SD58

CV1

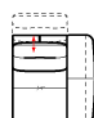
comfort tilt 3-
seater



L 236
H96 D112 SH46 SD58

CV3

comfort tilt 3-str
maxi



L 108
H96 D112 SH46 SD58

CV5

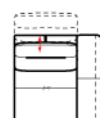
comfort tilt rhf
chair



L 108
H96 D112 SH46 SD58

CV6

comfort tilt lhs
chair



L 118
H96 D112 SH46 SD58

CV9

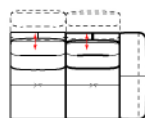
comfort tilt rhf
maxi chair



L 118
H96 D112 SH46 SD58

CZ0

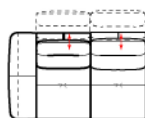
comfort tilt lhs
maxi chair



L 178
H96 D112 SH46 SD58

CZ3

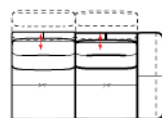
comfort tilt rhf 3-
seater



L 178
H96 D112 SH46 SD58

CZ4

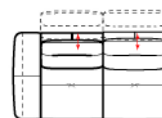
comfort tilt lhs 3-
seater



L 198
H96 D112 SH46 SD58

CZ7

comfort tilt maxi
rhf 3-str



L 198
H96 D112 SH46 SD58

CZ8

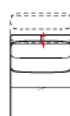
comfort tilt maxi
lhs 3-str



L 70
H96 D112 SH46 SD58

DF5

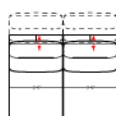
comfort tilt
armless chair



L 80
H96 D112 SH46 SD58

DF7

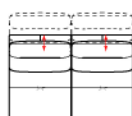
comfort tilt maxi
arml.chair



L 140
H96 D112 SH46 SD58

DA6

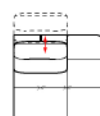
comfort tilt
armless 3-str



L 160
H96 D112 SH46 SD58

DA8

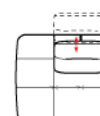
comf.tilt armless
maxi 3-str



L 117
H96 D112 SH46 SD58

DB5

comf.tilt rhf
merid.arml.chr



L 117
H96 D112 SH46 SD58

DB6

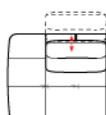
comf.tilt lhs
merid.arml.chr



L 127
H96 D112 SH46 SD58

DC3

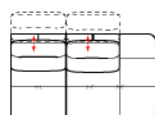
com.tilt rhf
mer.ar.maxi chr



L 127
H96 D112 SH46 SD58

DC4

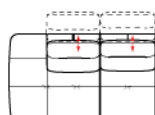
com.tilt lhs
mer.ar.maxi chr



L 187
H96 D112 SH46 SD58

DC7

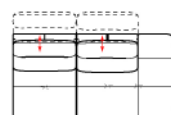
comf. tilt rhf
mer.arml. 3-s



L 187
H96 D112 SH46 SD58

DC8

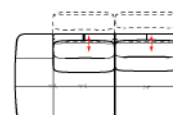
comf. tilt lhs
mer.arml. 3-s



L 207
H96 D112 SH46 SD58

DD5

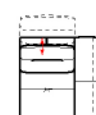
comf.tilt rhf
mer.maxi ar.3s



L 207
H96 D112 SH46 SD58

DD6

comf.tilt lhs
mer.maxi ar.3s



L 108
H96 D132 SH46 SD78

DD9

comfort tilt rhf
chaise long

↓ fold following the dotted line ↓



↑ fold following the dotted line ↑

alba.premium 1226



L Length - H Height - D Depth - SH Seat Height - SD Seat Depth
Dimensions refer to maximum sizes of the version with closed mechanism (where available).

dimensions	L 108 H96 D132 SH46 SD78	L 118 H96 D132 SH46 SD78	L 118 H96 D132 SH46 SD78	L 125 H96 D125 SH46 SD58	L 115 H96 D115 SH46 SD58
version code	DE0	DE3	DE4	DE7	DE9
Description	comfort tilt lhf chaise long	com.tilt rhf maxi chais long	com.tilt lhf maxi chais long	comfort tilt corner	comfort tilt sq. corner
L 230 H96 D115 SH46 SD58	L 230 H96 D115 SH46 SD58	L 70 H46 D70 SH- SD-	L 80 H46 D70 SH- SD-	L - H- D- SH- SD-	L - H- D- SH- SD-
DF1	DF2	540	635	V74	V75
com.tilt rhf mer.chr sq.cor.	com.tilt lhf mer.chr sq.cor.	ottoman	rectangular ottoman	df2 + cz7	cz8 + de7 + cv9
L - H- D- SH- SD-	L - H- D- SH- SD-				
V76	V77				
cz4 + dd9	de4 + cz7				

↓ fold following the dotted line ↓



alba.premium 1226

Model Code F5668

date of issue 15-03-23
revision 00 of 16-06-23
(the present replaces any previous versions)



**Multicover (combination of different materials)	<input checked="" type="checkbox"/>	<input type="checkbox"/>
	YES	NO

**Multicolor (different colors belonging to the same material)	<input checked="" type="checkbox"/>	<input type="checkbox"/>
	YES	NO

1st cover	<input type="checkbox"/>	<input type="checkbox"/>	<input checked="" type="checkbox"/>	<input checked="" type="checkbox"/>
	SPLIT	LEATHER	FABRIC	MICROFIBER
2nd cover	<input type="checkbox"/>	<input type="checkbox"/>	<input checked="" type="checkbox"/>	<input checked="" type="checkbox"/>
	SPLIT	LEATHER	FABRIC	MICROFIBER
3rd cover	<input type="checkbox"/>	<input type="checkbox"/>	<input type="checkbox"/>	<input type="checkbox"/>
	SPLIT	LEATHER	FABRIC	MICROFIBER

1st color	<input type="checkbox"/>	<input type="checkbox"/>	<input checked="" type="checkbox"/>	<input checked="" type="checkbox"/>
	SPLIT	LEATHER	FABRIC	MICROFIBER
2nd color	<input type="checkbox"/>	<input type="checkbox"/>	<input checked="" type="checkbox"/>	<input checked="" type="checkbox"/>
	SPLIT	LEATHER	FABRIC	MICROFIBER
3rd color	<input type="checkbox"/>	<input type="checkbox"/>	<input type="checkbox"/>	<input type="checkbox"/>
	SPLIT	LEATHER	FABRIC	MICROFIBER

**Multicategory (different categories belonging to the same material)	<input checked="" type="checkbox"/>	<input type="checkbox"/>
	YES	NO

Available in multi-covering: 1st cov. (fabric or microfiber): frame, cushions and armrests; 2nd cov. (fabric or microfiber): backrests.
Also available in multicolor: 1st col. (fabric or microfiber): frame, cushions and armrests; 2nd col. backrests.

