

Molteni & C

STRIPE — VINCENT VAN DUYSSEN 2018

1—
2



General notes

- Copyright protected
- Any irregularities should not be considered a defect but an element that emphasizes the distinctiveness of craft work
- A slight variation in colour may occur from dye lot to dye lot
- Variations of +/- 3% on measurements supplied or required are within standard.

DATASHEET

REGISTERED
DESIGN

IX.2018

moltenigroup.com

Dimensions in centimeters and inches. The right to discontinue and make changes is reserved. This information is based on the latest product information available at the time of printing.

TECHNICAL INFORMATION

Height fleece: cm. 1,4
Density: 4,5 Kg/mq
Structure: hand-tufted
50% Wool 50% Tencel

COLOURS

Cream grey_ Mint green_Military green_Night grey

MAINTENANCE

Vacuum cleaner, at least 2000W

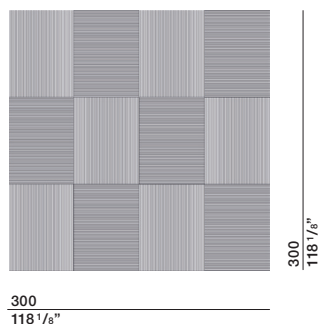
CLEANING

Recommended professional cleaning

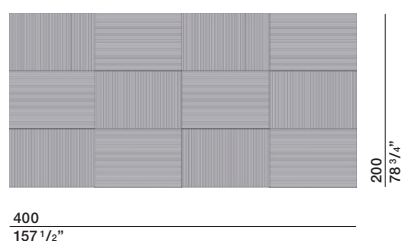
Customised carpets are not available.

DIMENSIONS

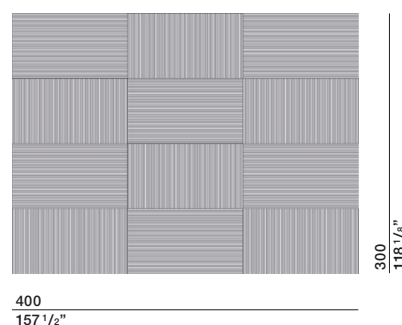
TAST01



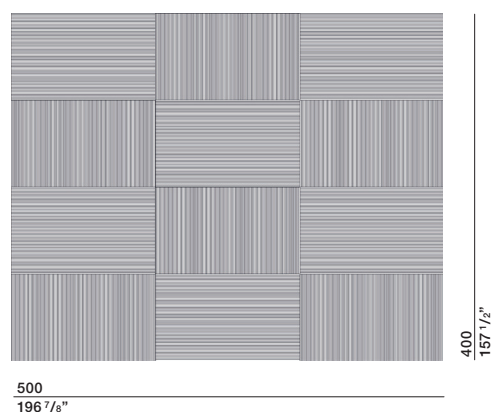
TAST02



TAST03



TAST04

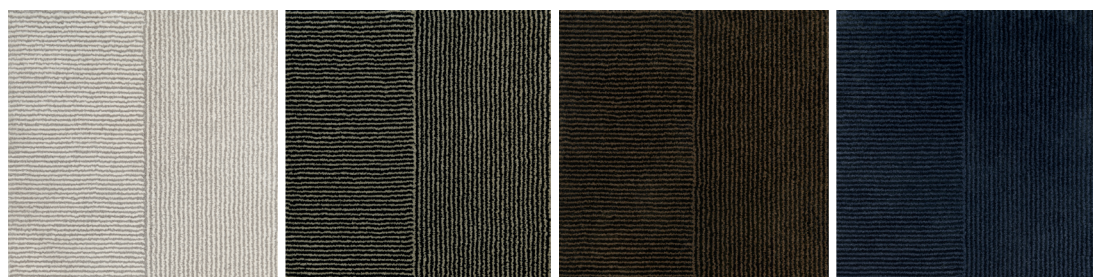


Cream grey

Mint green

Military green

Night grey



DATASHEET

REGISTERED
DESIGN

IX.2018

CARPET COLLECTION

PALETTE - EDGE - STRIPE - ATALANTE

PALETTE EDGE STRIPE

Warning

- 1 Natural fibres will be damaged by direct sunlight and humid places.
- 2 Periodically turn the carpet to avoid localised wear in areas of habitual traffic and/or points subjected to pressure.
- 3 During the first months, a certain amount of pilling is normal. It will begin to diminish after a few weeks of use and does not influence the resistance, look and quality in any way.
- 4 These carpets are hand made and therefore, small variations in shape and size can occur (up to about 3%).
- 5 Small variations in colour could occur from one dye lot to another.

Advice for maintenance and cleaning

- 1 Vacuum the carpet to clean it, and also to reduce pilling and improve the quality of the carpet.
- 2 Regular cleaning is essential to maintain the original look of the carpet. Use a good vacuum cleaner, at least 2000W, and run it in the direction of the pile.

Stain removal

- 1 Dry clean only! Do not clean with water.
- 2 For deeper cleaning, contact a company specialised in carpet cleaning.

Warning

ATALANTE

- 1 Natural fibres will be damaged by direct sunlight and humid places.
- 2 Regularly rotate and turn the carpet over to avoid localised wear and tear and traffic lanes and to ensure dirt shakes off easily.
- 3 During the first few months, some yarns may come loose as hemp is a 100% natural, untreated material. This does not affect the resistance, appearance and quality of the carpet.
- 4 These carpets are hand made and therefore, small variations in shape and size can occur (up to about 3%).
- 5 Minor shade variations may occur between dyeing batches.

Advice for maintenance and cleaning

- 1 Vacuuming the carpet is essential for thorough cleaning.
- 2 Regular cleaning is essential to maintain the original look of the carpet. Use a vacuum cleaner with a rotating brush.

Stain removal

- 1 The sooner you tackle a stain, the easier it is to clean it and the higher your chance of removing it successfully.
- 2 Stains should be removed immediately and thoroughly, and then dried with a hair dryer taking care not to damage the fibres.
- 3 Never pour water onto a stain; instead, dab with a damp white cloth.
- 4 Some discolouration may occur after removing a stain.
- 5 For deeper cleaning, contact a company specialised in carpet cleaning.