

# Caboche, sospensione

by Patricia Urquiola , Eliana Gerotto

FOSCARINI



## DESCRIPTION

Suspension lamp with diffused light. Acid etched finish blown glass internal diffuser, satin finish opaline glass lower screen. In the small version, single acid-etched finish blow glass internal diffuser. External diffuser consisting of a crown of polycarbonate arches secured to a chromed metal mount and PMMA spheres. Fitted with three stainless steel suspension cables for the medium and large versions, one for the small version, and transparent electrical cable. Ceiling rose with galvanised metal bracket and glossy chromed batch-dyed ABS cover. Canopy decentralisation kit available. Multiple canopy for small version up to 6 suspension lamps.

## MATERIALS

Polymethylmethacrylate, blown glass, chromed metal and aluminium (LED version)

## COLORS

Gold, Trasparent

# Caboche, sospensione

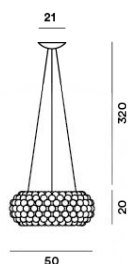
technical details

FOSCARINI

Resulting from the desire to create a precious and charming lamp like a pearl bracelet, accommodated with a focus on light weight and transparency thanks to the use of PMMA, Caboche established itself from the onset as one of Foscarini's best-selling products, and it has become a genuine icon in the world of lighting and design. Rich, bright and sophisticated, Caboche is a mosaic of refractions, a perfect fusion of different personalities in the one form, coming together to create the body and light effect of the lamp. When it is turned on, the light diffuses from inside the spheres like lots of bright crystals, providing 360° lighting of the surrounding environment and guaranteeing direct lighting on the underlying surface and reflection on the ceiling. This lighting emotion is also vouched by Led versions – affording high energy efficiency levels and durability - completely re-engineered in terms of lighting technology especially to ensure the same intensity, diffusion and temperature as the light produced by the original version. Caboche suspension lamp is a jewel of creativity and technology, available in three sizes and two versions: transparent and yellow gold. The lamp is the perfect protagonist for homes or public areas, uniting visual impact with lightness, decorative value and functionality.

## Caboche media LED

### SCHEMATIC & LIGHT EMISSION



### MATERIAL

Polymethylmethacrylate, blown glass, chromed metal and aluminium (LED version)

### COLORS



### LIGHT SOURCE

LED 35W

### CERTIFICATIONS



### ENERGY EFFICIENCY

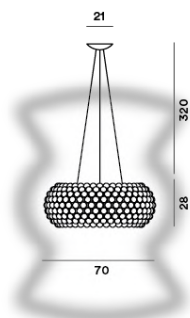
A+

### ACCESSORIES

Kit B

## Caboche grande

### SCHEMATIC & LIGHT EMISSION



### MATERIAL

Polymethylmethacrylate, blown glass, chromed metal and aluminium (LED version)

### COLORS



### LIGHT SOURCE

LED retrofit, Halo 1x 230W R7s

### CERTIFICATIONS



### ENERGY EFFICIENCY

A+, A, C

### ACCESSORIES

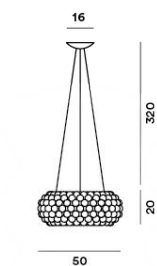
Kit B

Kit F

Kit M

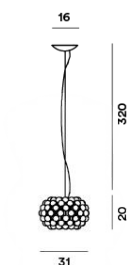
## Caboche media

## SCHEMATIC &amp; LIGHT EMISSION



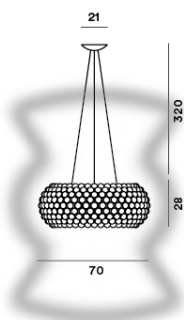
## Caboche piccola

## SCHEMATIC &amp; LIGHT EMISSION



## Caboche grande LED

## SCHEMATIC &amp; LIGHT EMISSION



## MATERIAL

Polymethylmethacrylate, blown glass, chromed metal and aluminium (LED version)

## COLORS



## LIGHT SOURCE

LED retrofit, Halo 1x 160W R7s

## CERTIFICATIONS



## ENERGY EFFICIENCY

A+, A, C

## ACCESSORIES

Kit B

Kit F

Kit M

## MATERIAL

Polymethylmethacrylate, blown glass, chromed metal and aluminium (LED version)

## COLORS



## LIGHT SOURCE

LED retrofit, Halo 1x 60W Dimmable G9

## CERTIFICATIONS



## ENERGY EFFICIENCY

A+, A, C

## ACCESSORIES

Round multiple canopy

Linear multiple canopy 90 cm

Linear multiple canopy 135 cm

Kit B

Kit F

Kit M

## MATERIAL

Polymethylmethacrylate, blown glass, chromed metal and aluminium (LED version)

## COLORS



## LIGHT SOURCE

LED 46W

LED 46W Dimmable

## CERTIFICATIONS



## ENERGY EFFICIENCY

A+

## ACCESSORIES

Kit B

# Caboche, sospensione

Designer

FOSCARINI

PATRICIA URQUIOLA

An internationally renowned architect and designer, Patricia Urquiola has received multiple major acknowledgements such as the “Designer of the Decade” title from the Home and Häuser magazines, and “Designer of the Year” from Wallpaper, Ad Spain, Elle Decor International and Architektur und Wohnen Magazine.

Some of her projects are exhibited in several museums and collections. Together with Eliana Gerotto, industrial designer, curator of outfits and interior decorator, she has designed Caboche, a precious, luminous emotion that stems from a combination of technology and creativity.



# Caboche, sospensione

Designer

FOSCARINI

---

ELIANA GEROTTO

A Venetian, she obtained her diploma in Communication Techniques in Milan. She has worked as a graphic designer for the Parisian magazine, Elle, and for the Venice Biennale, while she co-operates with some major Italian brands as image and product consultant.

Her creative entrepreneurship drives her towards ever-differing professional experiences, from interior designs to furnishings and even jewellery. Together with Patricia Urquiola, she has designed Caboche, a precious, luminous emotion that stems from a combination of technology and creativity.

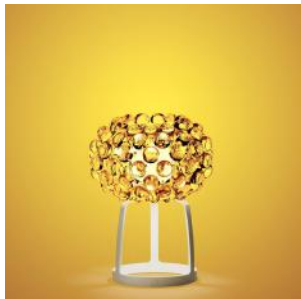


# Caboche, sospensione

family

---

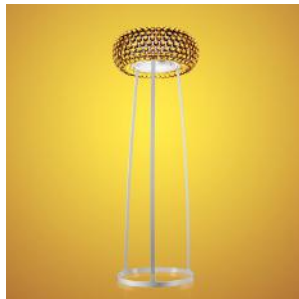
FOSCARINI



Caboche



Caboche



Caboche



Caboche

# Caboche, parete

by Patricia Urquiola , Eliana Gerotto

FOSCARINI



## DESCRIPTION

Wall lamp with reflected and diffused light. Acid-etched finish blown glass internal diffuser, external diffuser consisting of polycarbonate arches secured to a chromed metal mount and PMMA spheres. Wall mounting plate and fitting, housing the lighting technology part, made of aluminium color epoxy powder coated die cast zamak.

## MATERIALS

Polymethylmethacrylate, blown glass and chromed metal

## COLORS

Gold, Trasparent

# Caboche, parete

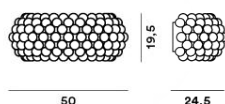
technical details

FOSCARINI

Rich, bright and sophisticated, the Caboche lamp is a mosaic of refractions, a perfect fusion of different personalities in the one form, coming together to create the body and light effect of the lamp. When it is turned on, the light diffuses from inside the spheres like lots of bright crystals, lighting the surrounding environment. Caboche wall lamp is a jewel of creativity and technology, available in two sizes and two versions: transparent and yellow gold. The lamp is the perfect protagonist for homes or public areas, uniting visual impact with lightness, decorative value and functionality.

## Caboche media

### SCHEMATIC & LIGHT EMISSION



### MATERIAL

Polymethylmethacrylate, blown glass  
and chromed metal

### COLORS



### LIGHT SOURCE

LED retrofit, Halo 1x 120W R7s

### CERTIFICATIONS

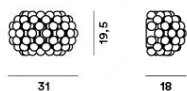


### ENERGY EFFICIENCY

A+, A, C

## Caboche piccola

### SCHEMATIC & LIGHT EMISSION



### MATERIAL

Polymethylmethacrylate, blown glass  
and chromed metal

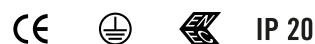
### COLORS



### LIGHT SOURCE

LED retrofit, Halo 1x 120W R7s

### CERTIFICATIONS



### ENERGY EFFICIENCY

A+, A, C



# Caboche, parete

Designer

FOSCARINI

## PATRICIA URQUIOLA

An internationally renowned architect and designer, Patricia Urquiola has received multiple major acknowledgements such as the “Designer of the Decade” title from the Home and Häuser magazines, and “Designer of the Year” from Wallpaper, Ad Spain, Elle Decor International and Architektur und Wohnen Magazine.

Some of her projects are exhibited in several museums and collections. Together with Eliana Gerotto, industrial designer, curator of outfits and interior decorator, she has designed Caboche, a precious, luminous emotion that stems from a combination of technology and creativity.



# Caboche, parete

Designer

FOSCARINI

---

ELIANA GEROTTO

A Venetian, she obtained her diploma in Communication Techniques in Milan. She has worked as a graphic designer for the Parisian magazine, Elle, and for the Venice Biennale, while she co-operates with some major Italian brands as image and product consultant.

Her creative entrepreneurship drives her towards ever-differing professional experiences, from interior designs to furnishings and even jewellery. Together with Patricia Urquiola, she has designed Caboche, a precious, luminous emotion that stems from a combination of technology and creativity.



# Caboche, parete

family

---

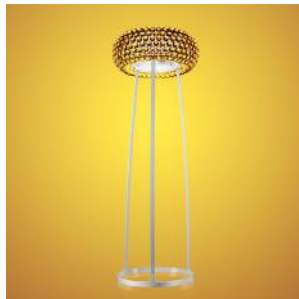
FOSCARINI



Caboche



Caboche



Caboche



Caboche

# Caboche, soffitto

by Patricia Urquiola , Eliana Gerotto

FOSCARINI



## DESCRIPTION

Ceiling lamp with reflected and diffused light. Acid-etched finish blown glass internal diffuser, external diffuser consisting of a crown of polycarbonate arches secured to a chromed metal mount and PMMA spheres. Mounting plate and mount, housing the lighting technology part, made of aluminium color epoxy powder coated die cast zamak.

## MATERIALS

Polymethylmethacrylate, blown glass and chromed metal

## COLORS

Gold, Trasparent

# Caboche, soffitto

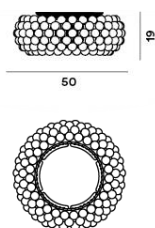
technical details

FOSCARINI

Rich, bright and sophisticated, the Caboche lamp is a mosaic of refractions, a perfect fusion of different personalities in the one form, coming together to create the body and light effect of the lamp. When it is turned on, the light diffuses from inside the spheres like lots of bright crystals, lighting the surrounding environment. Caboche ceiling lamp is a jewel of creativity and technology, available in two versions: transparent and yellow gold. The lamp is the perfect protagonist for homes or public areas, uniting visual impact with lightness, decorative value and functionality.

## Caboche

### SCHEMATIC & LIGHT EMISSION



### MATERIAL

Polymethylmethacrylate, blown glass  
and chromed metal

### COLORS



### LIGHT SOURCE

LED retrofit, Halo 1x 120W R7s

### CERTIFICATIONS



### ENERGY EFFICIENCY

A+, A, C

### ACCESSORIES

Caboche

# Caboche, soffitto

Designer

FOSCARINI

PATRICIA URQUIOLA

An internationally renowned architect and designer, Patricia Urquiola has received multiple major acknowledgements such as the “Designer of the Decade” title from the Home and Häuser magazines, and “Designer of the Year” from Wallpaper, Ad Spain, Elle Decor International and Architektur und Wohnen Magazine.

Some of her projects are exhibited in several museums and collections. Together with Eliana Gerotto, industrial designer, curator of outfits and interior decorator, she has designed Caboche, a precious, luminous emotion that stems from a combination of technology and creativity.



# Caboche, soffitto

Designer

FOSCARINI

---

ELIANA GEROTTO

A Venetian, she obtained her diploma in Communication Techniques in Milan. She has worked as a graphic designer for the Parisian magazine, Elle, and for the Venice Biennale, while she co-operates with some major Italian brands as image and product consultant.

Her creative entrepreneurship drives her towards ever-differing professional experiences, from interior designs to furnishings and even jewellery. Together with Patricia Urquiola, she has designed Caboche, a precious, luminous emotion that stems from a combination of technology and creativity.



# Caboche, soffitto

family

---

FOSCARINI



Caboche



Caboche



Caboche



Caboche



# Caboche, tavolo

by Patricia Urquiola , Eliana Gerotto

FOSCARINI



## DESCRIPTION

Table or floor lamp with diffused and direct light. Satin finish blown glass internal diffuser, satin finish opaline glass lower screen. External diffuser consisting of a crown of polycarbonate arches secured to a chromed metal mount and PMMA spheres. Base and rods in powder coated die cast aluminium. On/off switch on the black cable.

## MATERIALS

Polymethylmethacrylate, blown glass, chromed metal and varnished aluminium

## COLORS

Gold, Trasparent

# Caboche, tavolo

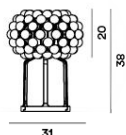
technical details

FOSCARINI

Rich, bright and sophisticated, the Caboche lamp is a mosaic of refractions, a perfect fusion of different personalities in the one form, coming together to create the body and light effect of the lamp. When it is turned on, the light diffuses from inside the spheres like lots of bright crystals, providing 360° lighting of the surrounding environment and guaranteeing an illuminated underlying surface. Caboche table is a small jewel of creativity and technology, available in two versions: transparent and yellow gold. The original design of the stem is created by the three supports that join together to form the round base, recalling the spherical form of the diffuser, and thus guaranteeing a combination of coherence, originality and lightness. Caboche is the perfect protagonist for homes or public areas, uniting visual impact with lightness, decorative value and functionality.

## Caboche

### SCHEMATIC & LIGHT EMISSION



### MATERIAL

Polymethylmethacrylate, blown glass,  
chromed metal and varnished  
aluminium

### COLORS



### LIGHT SOURCE

LED retrofit, Halo 1x 48W G9

### CERTIFICATIONS

CE □ IP 20

### ENERGY EFFICIENCY

A+, A, C

# Caboche, tavolo

Designer

FOSCARINI

## PATRICIA URQUIOLA

An internationally renowned architect and designer, Patricia Urquiola has received multiple major acknowledgements such as the “Designer of the Decade” title from the Home and Häuser magazines, and “Designer of the Year” from Wallpaper, Ad Spain, Elle Decor International and Architektur und Wohnen Magazine.

Some of her projects are exhibited in several museums and collections. Together with Eliana Gerotto, industrial designer, curator of outfits and interior decorator, she has designed Caboche, a precious, luminous emotion that stems from a combination of technology and creativity.



# Caboche, tavolo

Designer

FOSCARINI

---

ELIANA GEROTTO

A Venetian, she obtained her diploma in Communication Techniques in Milan. She has worked as a graphic designer for the Parisian magazine, Elle, and for the Venice Biennale, while she co-operates with some major Italian brands as image and product consultant.

Her creative entrepreneurship drives her towards ever-differing professional experiences, from interior designs to furnishings and even jewellery. Together with Patricia Urquiola, she has designed Caboche, a precious, luminous emotion that stems from a combination of technology and creativity.



# Caboche, tavolo

family

---

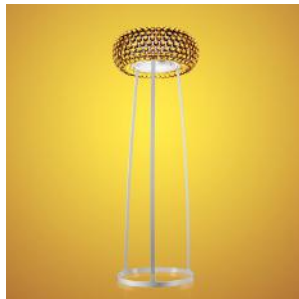
FOSCARINI



Caboche



Caboche



Caboche



Caboche

# Caboche, terra

by Patricia Urquiola , Eliana Gerotto

FOSCARINI



## DESCRIPTION

Floor lamp with diffused, direct and indirect light. Satin finish blown glass internal diffuser, satin finish opaline glass lower screen. External diffuser consisting of a crown of polycarbonate arches secured to a chromed metal mount and PMMA spheres. Round die cast aluminium base and epoxy powder coated extruded aluminium rods. The transparent cable is fitted with a dimmer which can be used both to adjust the level of luminous intensity gradually or as the ON/OFF switch.

## MATERIALS

Polymethylmethacrylate, blown glass, chromed metal and varnished aluminium

## COLORS

Gold, Trasparent

# Caboche, terra

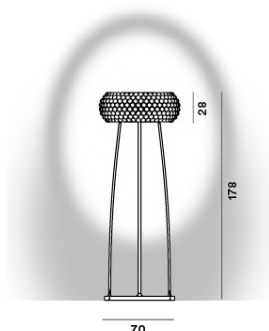
technical details

FOSCARINI

Rich, bright and sophisticated, the Caboche lamp is a mosaic of refractions, a perfect fusion of different personalities in the one form, coming together to create the body and light effect of the lamp. When it is turned on, the light diffuses from inside the spheres like lots of bright crystals, providing 360° lighting of the surrounding environment and guaranteeing both upward and downward lighting. Caboche floor lamp is a small jewel of creativity and technology, available in two sizes and two versions: transparent and yellow gold. The original design of the stem is created by the three supports that join together to form the round base, recalling the spherical form of the diffuser, and thus guaranteeing a combination of coherence, originality and lightness. Caboche is the perfect protagonist for homes or public areas, uniting visual impact with lightness, decorative value and functionality.

## Caboche grande

### SCHEMATIC & LIGHT EMISSION



### MATERIAL

Polymethylmethacrylate, blown glass, chromed metal and varnished aluminium

### COLORS



### LIGHT SOURCE

LED retrofit, Halo 1x 230W R7s

### CERTIFICATIONS

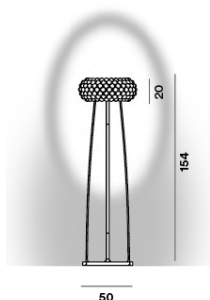
CE □ IP 20

### ENERGY EFFICIENCY

A+, A, C

## Caboche media

### SCHEMATIC & LIGHT EMISSION



### MATERIAL

Polymethylmethacrylate, blown glass, chromed metal and varnished aluminium

### COLORS



### LIGHT SOURCE

LED retrofit, Halo 1x 160W R7s

### CERTIFICATIONS

CE □ IP 20

### ENERGY EFFICIENCY

A+, A, C

# Caboche, terra

Designer

FOSCARINI

## PATRICIA URQUIOLA

An internationally renowned architect and designer, Patricia Urquiola has received multiple major acknowledgements such as the “Designer of the Decade” title from the Home and Häuser magazines, and “Designer of the Year” from Wallpaper, Ad Spain, Elle Decor International and Architektur und Wohnen Magazine.

Some of her projects are exhibited in several museums and collections. Together with Eliana Gerotto, industrial designer, curator of outfits and interior decorator, she has designed Caboche, a precious, luminous emotion that stems from a combination of technology and creativity.





# Caboche, terra

Designer

FOSCARINI

---

ELIANA GEROTTO

A Venetian, she obtained her diploma in Communication Techniques in Milan. She has worked as a graphic designer for the Parisian magazine, Elle, and for the Venice Biennale, while she co-operates with some major Italian brands as image and product consultant.

Her creative entrepreneurship drives her towards ever-differing professional experiences, from interior designs to furnishings and even jewellery. Together with Patricia Urquiola, she has designed Caboche, a precious, luminous emotion that stems from a combination of technology and creativity.



**Caboche, terra**  
family

---

**FOSCARINI**



Caboche



Caboche



Caboche



Caboche